

# KNIGHT RIDER

RIDE BEYOND ETERNITY

www.runnerbd.com  
 | | RunnerMotorcycles



## Technical Specification

### ENGINE

Type: Racing CBF engine with high efficacy combustion chamber, light piston & anti-shake Start  
 Displacement: 150 cc  
 Max Power: 11.93 bhp @ 7500 rpm  
 Max Torque: 12.20 Nm @ 5500 rpm  
 Ignition: Digital CDI

### STARTING

Starting Method: Kick & Electric

### BRAKE

Front: Hydraulic Disc  
 Rear: Drum

### FUEL TANK

Capacity: 16.8 L  
 Reserve: 2 L

### TYRE SIZE

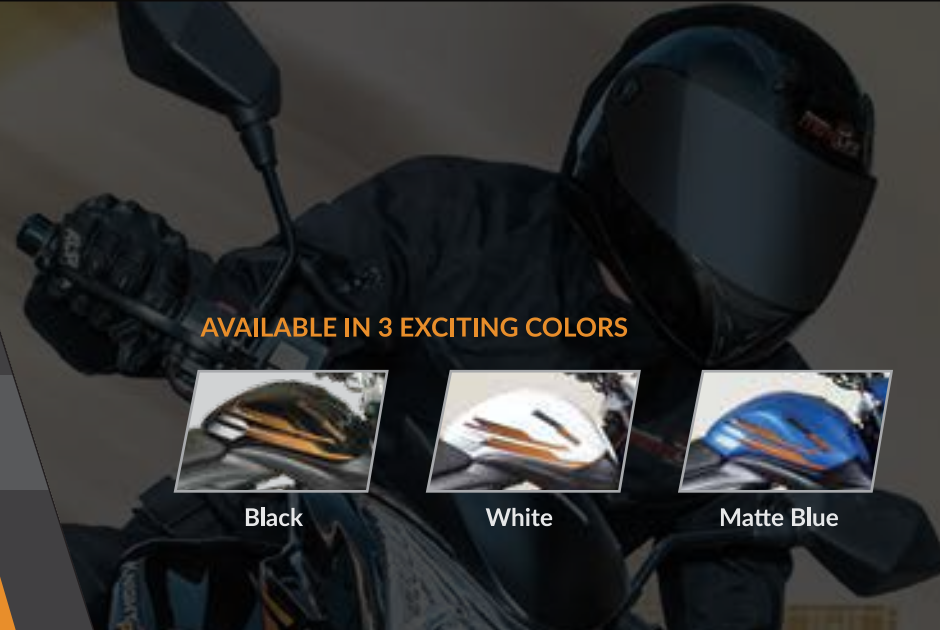
Front: 80/100 - 17 (Tubeless)  
 Rear: 110/80 - 17 (Tubeless)

### DIMENSION (mm)

L: 2025, W: 740, H: 1065  
 Wheelbase: 1335  
 Ground Clearance: 160

### WEIGHT (kg)

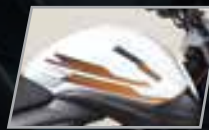
Dry Weight: 143 (Approx)



AVAILABLE IN 3 EXCITING COLORS



Black



White



Matte Blue

## RUNNER AUTOMOBILES LTD.

138/1, Tejgaon Industrial Area, Dhaka- 1208  
 Call us : 09611222000, 16273 (only from mobile)  
 Fax : +880 2 8870172

**RUNNER**  
 motorcycles



CALL US  
 096 11222000, 16273 (Mobile Only)



আমাদের  
 আপন...

**KNIGHT RIDER**  
RIDE BEYOND ETERNITY



**Unmatched Style & Performance**



**Racing CBF Engine**

Racing CBF Engine provides low vibration, less noise & fast acceleration for race like experience



**Adjustable GAS Monoshock Suspension**

Central mounted GAS technology cushion for extra comfort, better balancing and maneuvers.

**Quarter fairing fully loaded front digital speedometer**

Contemporary stylish quarter fairing fully loaded front digital speedometer for better visibility and elegance



**Inverted Triangle Shaped Exhaust Muffler**

Inverted Triangle Shaped Exhaust Muffler with excellent heat dissipation



**240 mm Disc Brake**

240 mm Disc brake for instant braking & rider safety



**17" Alloy Wheel with Tubeless tyre**

Latest technology Tubeless tyre for real racing experience



**Split Handle Bar**

Split handle bar for better controlling & convenient riding



**Muscular tank comes with attractive graphics**

Comes with Motion-flow graphics covering the muscular tank and body

